

OAKRIDGE AT COOPER RANCH

A SUBDIVISION IN A PART OF THE N/2 OF SECTION 31, TOWNSHIP 21
NORTH, RANGE 15 EAST OF THE 13TH E.M., ROGERS COUNTY, OKLAHOMA.

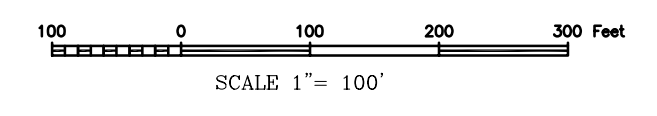
DEVELOPER:
KOURTIS PROPERTIES COOPER RANCH, LLC
9106 NORTH GARNETT ROAD
OWASSO, OKLA. 74055
272-3282

OAKRIDGE II AT COOPER RANCH

A SUBDIVISION IN A PART OF THE N/2 OF SECTION 31, TOWNSHIP 21
NORTH, RANGE 15 EAST OF THE 13TH E.M., ROGERS COUNTY, OKLAHOMA.

009643
BOOK 1176 PAGE 0653

STATE OF OKLAHOMA
COUNTY OF ROGERS
FILED
DATE 6-15-99 TIME 10:37AM
ANDREA L. WILLIS, COUNTY CLERK
BY TAMMY DAVIDSON
BOOK 1176 PAGE 0652



SURVEYOR:
PAYNE SURVEYING SERVICE
1216 W. WILL ROGERS BLVD.
CLAREMORE, OKLA.
341-0617

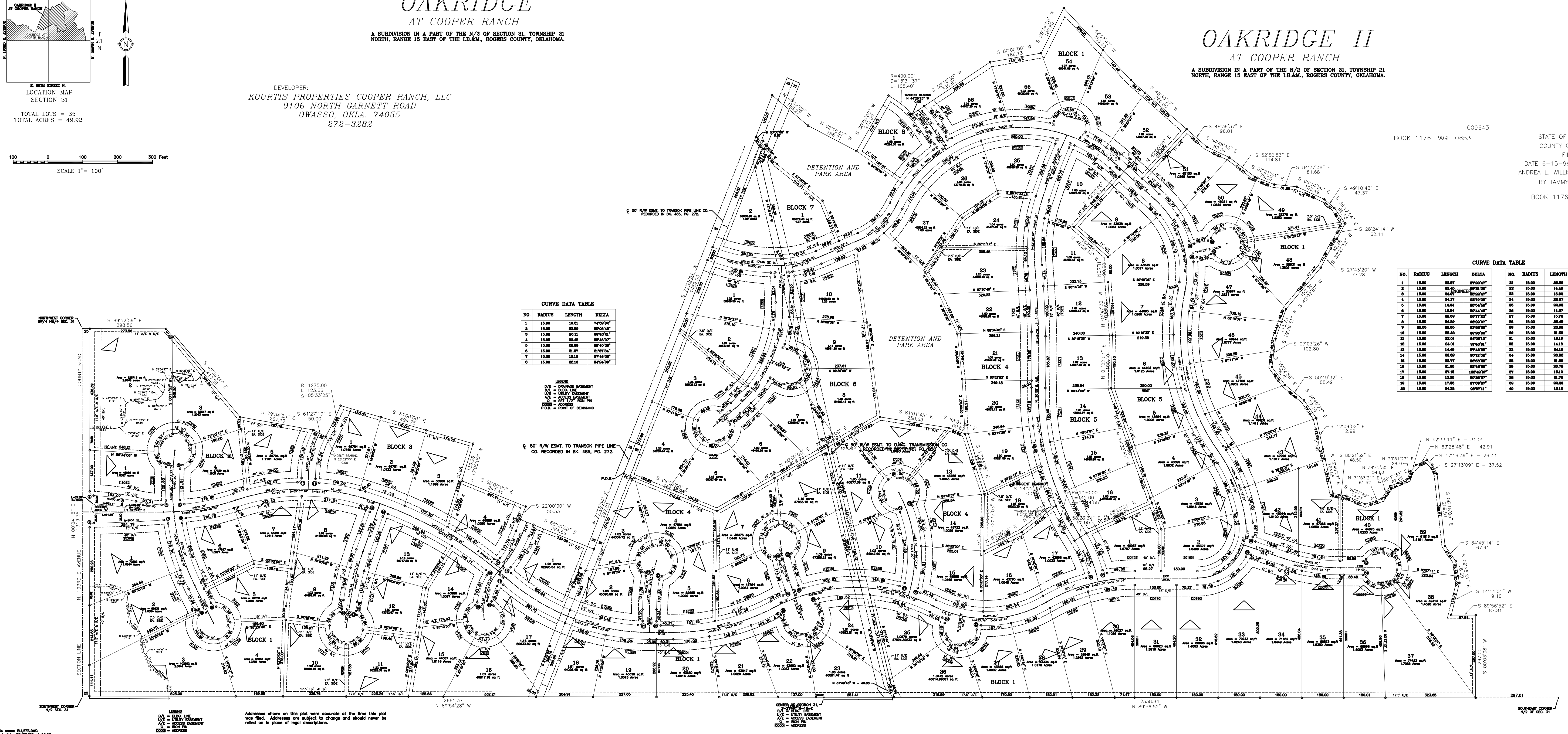
DENNIS L. HODO P.E., INC.
Consulting Engineer
E-101, 8655 N. 117TH E. AVE.
OWASSO, OK 74055
272-7652

CURVE DATA TABLE

NO.	RADIUS	LENGTH	DELTA
1	18.00	18.81	97°00'00"
2	18.00	20.00	90°00'00"
3	18.00	20.11	89°00'00"
4	18.00	20.46	87°00'00"
5	18.00	20.89	84°00'00"
6	18.00	21.97	80°00'00"
7	18.00	23.13	75°00'00"
8	18.00	24.50	69°00'00"

CURVE DATA TABLE

NO.	RADIUS	LENGTH	DELTA
1	18.00	20.87	87°00'00"
2	18.00	20.00	90°00'00"
3	18.00	20.11	89°00'00"
4	18.00	20.47	87°00'00"
5	18.00	20.84	84°00'00"
6	18.00	21.84	80°00'00"
7	18.00	23.00	75°00'00"
8	18.00	24.38	69°00'00"
9	18.00	25.98	63°00'00"
10	18.00	27.82	57°00'00"
11	18.00	29.91	51°00'00"
12	18.00	32.25	45°00'00"
13	18.00	34.94	39°00'00"
14	18.00	37.97	33°00'00"
15	18.00	41.34	27°00'00"
16	18.00	45.04	21°00'00"
17	18.00	49.07	15°00'00"
18	18.00	53.42	9°00'00"
19	18.00	58.08	3°00'00"
20	18.00	63.04	0°00'00"
21	18.00	68.29	3°00'00"
22	18.00	73.82	9°00'00"
23	18.00	79.61	15°00'00"
24	18.00	85.65	21°00'00"
25	18.00	91.94	27°00'00"
26	18.00	98.46	33°00'00"
27	18.00	105.21	39°00'00"
28	18.00	112.18	45°00'00"
29	18.00	119.37	51°00'00"
30	18.00	126.77	57°00'00"
31	18.00	134.38	63°00'00"
32	18.00	142.18	69°00'00"
33	18.00	150.17	75°00'00"
34	18.00	158.34	81°00'00"
35	18.00	166.68	87°00'00"
36	18.00	175.18	93°00'00"
37	18.00	183.84	99°00'00"
38	18.00	192.65	105°00'00"
39	18.00	201.61	111°00'00"
40	18.00	210.71	117°00'00"



LEGEND:
S = SURVEY POINT
C = CURVE CENTER
V = VERTICALLY CURVED
A = ACCESS EASEMENT
R = ROAD RIGHT-OF-WAY
D = DRIVE
X = CROSSING

Addresses shown on this plot were accurate at the time this plot was filed. Addresses are subject to change and should never be relied on in place of legal descriptions.

CONTROL POINTS:
1 = SURVEY POINT
2 = CURVE CENTER
3 = VERTICALLY CURVED
4 = ACCESS EASEMENT
5 = ROAD RIGHT-OF-WAY
6 = DRIVE
7 = CROSSING