

OAKRIDGE

AT COOPER RANCH

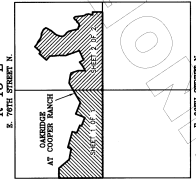
A SUBDIVISION IN A PART OF THE N/2 OF SECTION 31, TOWNSHIP 21 NORTH, RANGE 15 EAST OF THE 10TH RANGE, ROGERS COUNTY, OKLAHOMA.

009643

#663

DEVELOPER:
KOURTIS PROPERTIES COOPER RANCH, LLC
 9106 NORTH GARNETT ROAD
 OWASSO, OKLA. 74055
 272-3282

TOTAL LOTS = 86
 TOTAL ACRES = 114.36



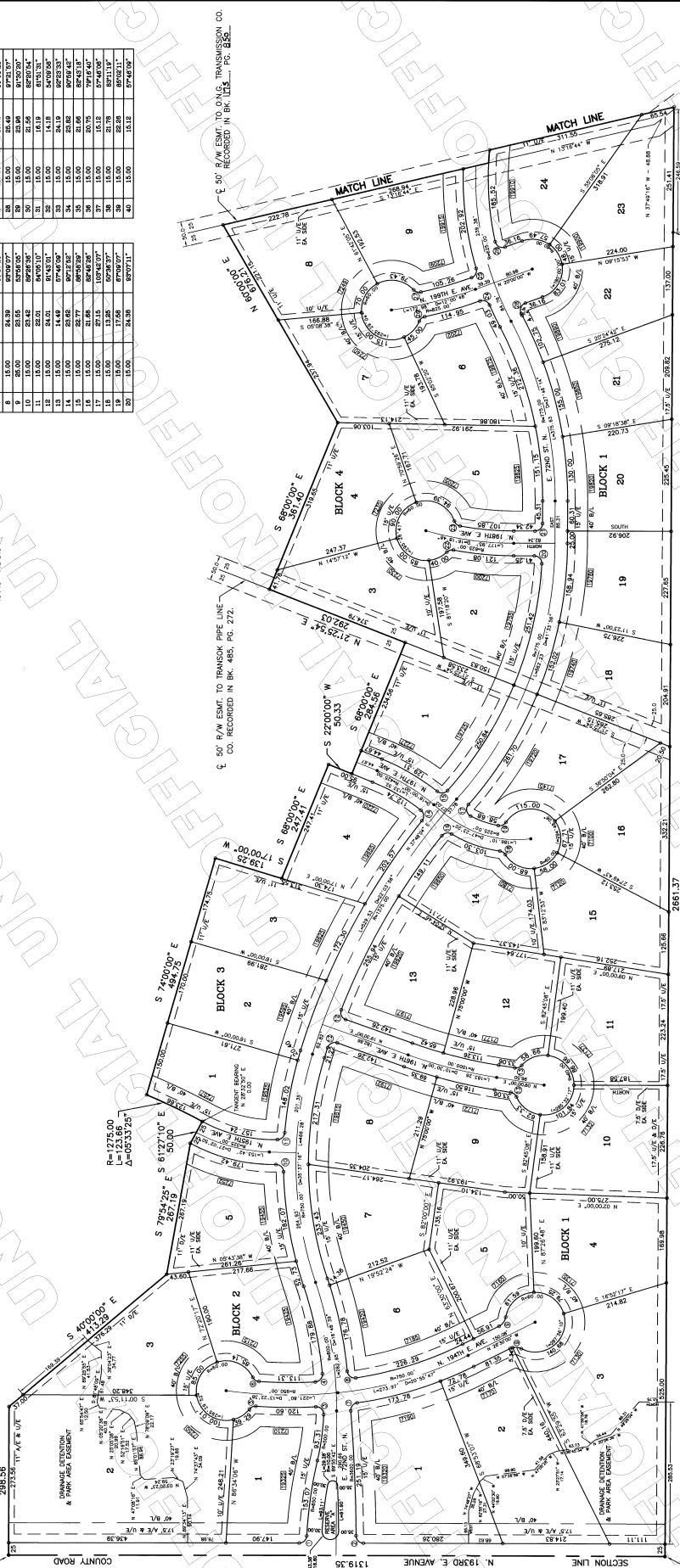
STATE OF OKLAHOMA
 COUNTY OF ROGERS
 FILED
 DATE **6-15-16** TIME **11:37 AM**
 ROBERT WILLY COUNTY CLERK
 200 N. WEST STREET, SUITE 100
 OWASSO, OKLA. 74055

SURVEYOR:
PAYNE SURVEYING SERVICE
 1216 W. WILL ROGERS BLVD.
 CLAREMORE, OKLA.
 341-0817

ENGINEER:
DENNIS L. HODO P.E., INC.
 Consulting Engineer
 E-101, 8555 N. 117TH E. AVE.
 OKMUSKA, OKLA. 74055
 272-7652

CURVE DATA TABLE

NO.	RADIUS	LENGTH	DELTA
1	15.00	22.87	87°52'47"
2	15.00	24.40	89°52'30"
3	15.00	24.40	89°52'30"
4	15.00	24.17	89°52'30"
5	15.00	14.64	89°52'30"
6	15.00	15.84	89°52'30"
7	15.00	24.94	89°52'30"
8	15.00	24.94	89°52'30"
9	15.00	24.94	89°52'30"
10	15.00	24.94	89°52'30"
11	15.00	24.94	89°52'30"
12	15.00	24.94	89°52'30"
13	15.00	24.94	89°52'30"
14	15.00	24.94	89°52'30"
15	15.00	24.94	89°52'30"
16	15.00	24.94	89°52'30"
17	15.00	24.94	89°52'30"
18	15.00	24.94	89°52'30"
19	15.00	24.94	89°52'30"
20	15.00	24.94	89°52'30"
21	15.00	23.59	89°52'30"
22	15.00	14.40	89°52'30"
23	15.00	22.87	89°52'30"
24	15.00	22.85	89°52'30"
25	15.00	14.67	89°52'30"
26	15.00	24.94	89°52'30"
27	15.00	24.94	89°52'30"
28	15.00	24.94	89°52'30"
29	15.00	24.94	89°52'30"
30	15.00	24.94	89°52'30"
31	15.00	24.94	89°52'30"
32	15.00	24.94	89°52'30"
33	15.00	24.94	89°52'30"
34	15.00	24.94	89°52'30"
35	15.00	24.94	89°52'30"
36	15.00	24.94	89°52'30"
37	15.00	24.94	89°52'30"
38	15.00	24.94	89°52'30"
39	15.00	24.94	89°52'30"
40	15.00	24.94	89°52'30"



Address shown on this plot were accurate at the time this plot was prepared. If any change in lot lines or boundaries should occur, the owner should refer to the original plat or deed for the correct description.

LEGEND:
 B/L = BLOCK LINE
 V/L = VILLAGE LANE
 P/L = PUBLIC ROAD
 D/O = DRIVE
 R/O = ROAD

SOUTHWEST CORNER
 N 00°04'18" E 1319.35'
 N 13°38' E AVENUE
 N 13°38' E AVENUE
 SECTION LINE
 N 13°38' E AVENUE
 N 00°04'18" E 1319.35'